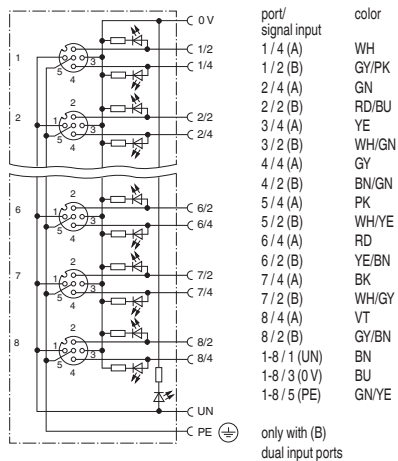


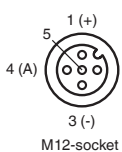
## Features

- Flat design
- LED indication for module supply and I/O status

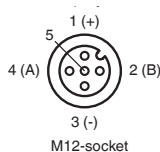
## Electrical connection



Single input:



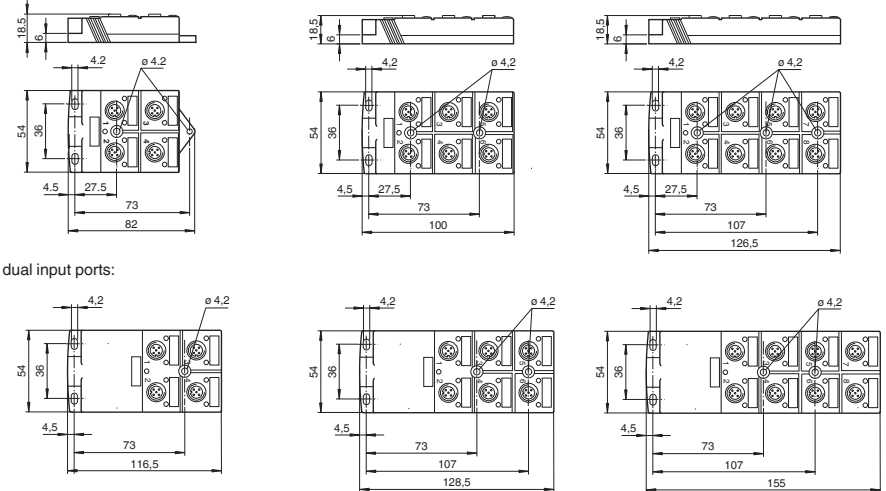
Dual input:



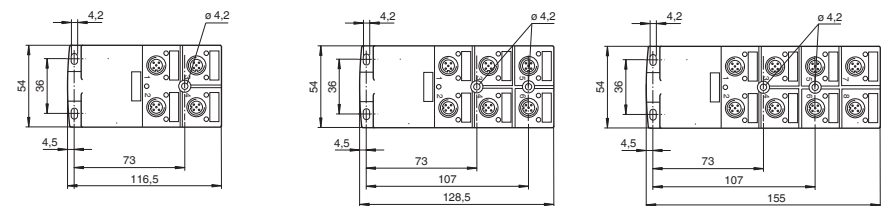
## Technical data

Number of pins	4, 5
Display/controls	
Green LED	Supply voltage per module
Yellow LED	I/O status indication
Electrical data	
Operating voltage $U_B$	24 V DC, max. 30 V DC
Operating current	≤ 5 mA per channel display element
Current loading	≤ 2 A per channel, ≤ 4 A per slot, ≤ 12 A total current per block
Ambient conditions	
Ambient temperature	-25 ... 75 °C for housing Cable, flexible: -5 ... 80 °C Cable, fixed: -40 ... 90 °C
Mechanical data	
Degree of protection	IP65/IP67
Connection	Cable: stranded wire, sockets: M12 x 1
Materials	
Contacts	CuSn
Contact surface	Ni/Au
Housing	PA, green
Cable	PUR, black
Strands	Signal line: 0.34 mm <sup>2</sup> Supply line, PE: 0.75 mm <sup>2</sup>
Bending radius	> 10 x line diameter

## Dimensions



dual input ports:



## Order codes

Cable lengths in m  
5 or 10

V 1 - . . . A - E 2 - . . . M - P U R

Ports/signal inputs	
4	4 ports/4 signal inputs
6	6 ports/6 signal inputs
8	8 ports/8 signal inputs
4/8	4 ports/8 signal inputs (dual inputs)
6/12	6 ports/12 signal inputs (dual inputs)
8/16	8 ports/16 signal inputs (dual inputs)

V1

- Standard, available in stock
- Available, minimum order quantity applies in some cases
- Not available



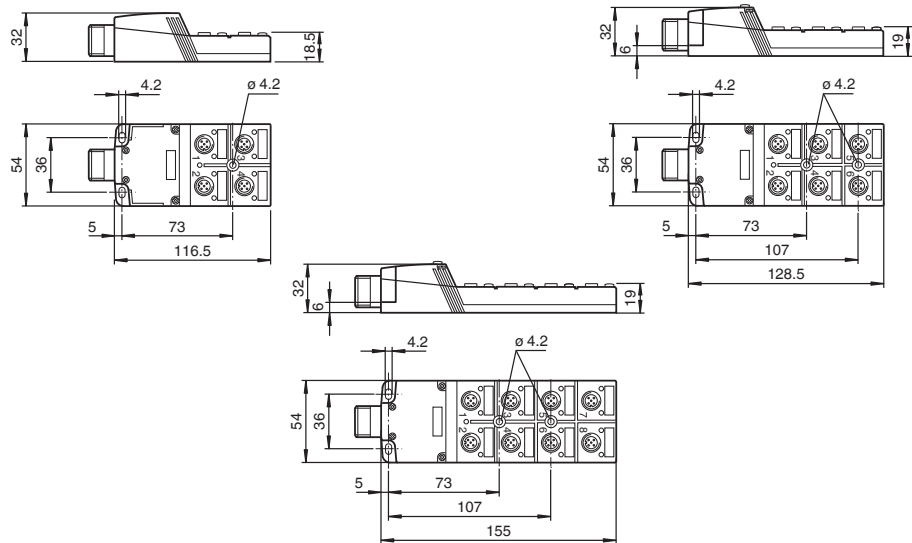
## Features

- Quick, easy mounting with cage terminals
- LED indication for module supply and I/O status

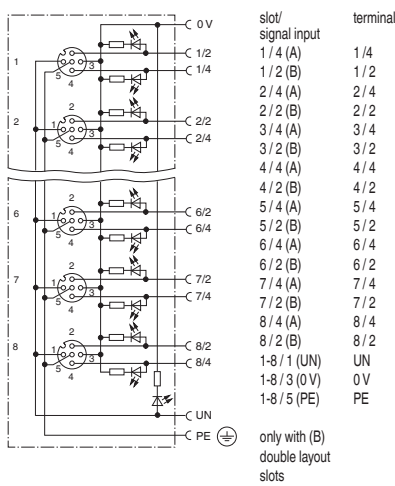
## Technical data

Number of pins	4, 5	
Display/controls		
Green LED	Supply voltage per module	
Yellow LED	I/O status indication	
Electrical data		
Operating voltage $U_B$	24 V DC, max. 30 V DC	
Operating current	≤ 5 mA per channel display element	
Current loading	≤ 2 A per channel, ≤ 4 A per slot, ≤ 12 A total current per block	
Ambient conditions		
Ambient temperature	-25 ... 75 °C	
Mechanical data		
Degree of protection	IP/65IP67	
Connection	Cage tension spring terminals Supply line, PE: 0.2 ... 1.5 mm <sup>2</sup> Signal line: 0.14 ... 1 mm <sup>2</sup>	M12 x 1 sockets
Cable diameter	6.5 ... 9.5 mm	
Materials		
Contacts	CuSn	
Contact surface	Ni/Au	
Housing	PA, green	

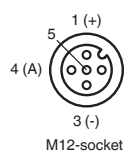
## Dimensions



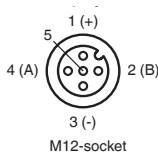
## Electrical connection



Single input:



Dual input:



## Order codes

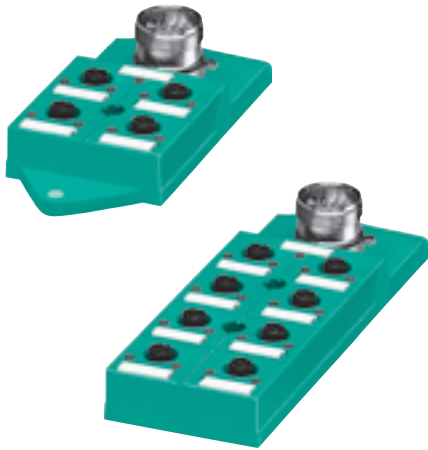
V 1 - . . . A - E 2

Ports/signal inputs	
4	4 ports/4 signal inputs
6	6 ports/6 signal inputs
8	8 ports/8 signal inputs
4/8	4 ports/8 signal inputs (dual inputs)
6/12	6 ports/12 signal inputs (dual inputs)
8/16	8 ports/16 signal inputs (dual inputs)

V1



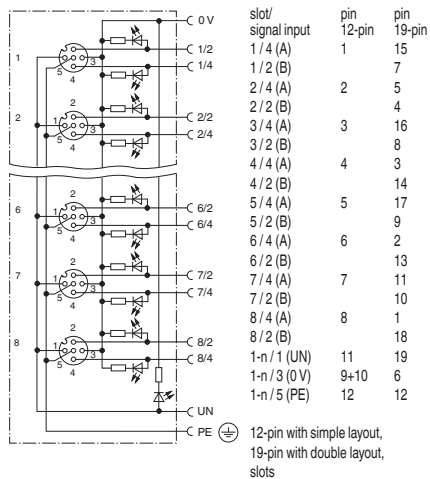
- Standard, available in stock
- Available, minimum order quantity applies in some cases
- Not available



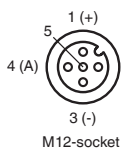
## Features

- Quick, flexible mounting/isolation
- LED indication for module supply and I/O status

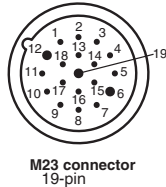
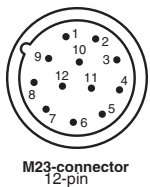
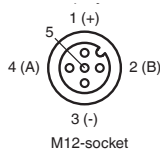
## Electrical connection



Single input:



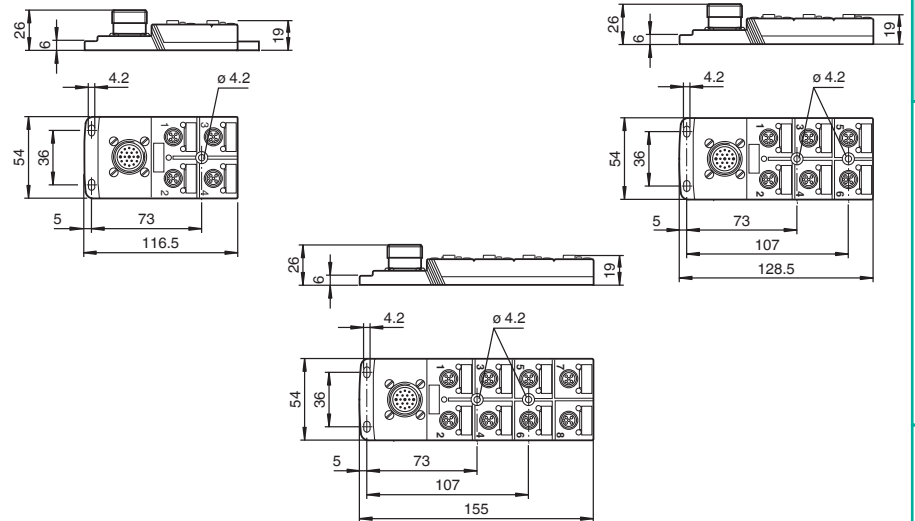
Dual input:



## Technical data

Number of pins	4, 5	
Display/controls		
Green LED	Supply voltage per module	
Yellow LED	I/O status indication	
Electrical data		
Operating voltage $U_b$	24 V DC, max. 30 V DC	
Operating current	≤ 5 mA per channel display element	
Current loading	≤ 2 A per channel, ≤ 4 A per slot, ≤ 12 A total current per block	
Ambient conditions		
Ambient temperature	-25 ... 75 °C	
Mechanical data		
Degree of protection	IP65/IP67	
Connection	Cylindrical connector: M23	Sockets: M12 x 1
Materials		
Contacts	CuSn	
Contact surface	Ni/Au	
Housing	PA, green	

## Dimensions



## Order codes

V 1 - . . . A - E 2 - M 2 3

### Ports/signal inputs

- 4 4 ports/4 signal inputs
- 6 6 ports/6 signal inputs
- 8 8 ports/8 signal inputs
- 4/8 4 ports/8 signal inputs (dual inputs)
- 6/12 6 ports/12 signal inputs (dual inputs)
- 8/16 8 ports/16 signal inputs (dual inputs)

V1

- Standard, available in stock
- Available, minimum order quantity applies in some cases
- Not available